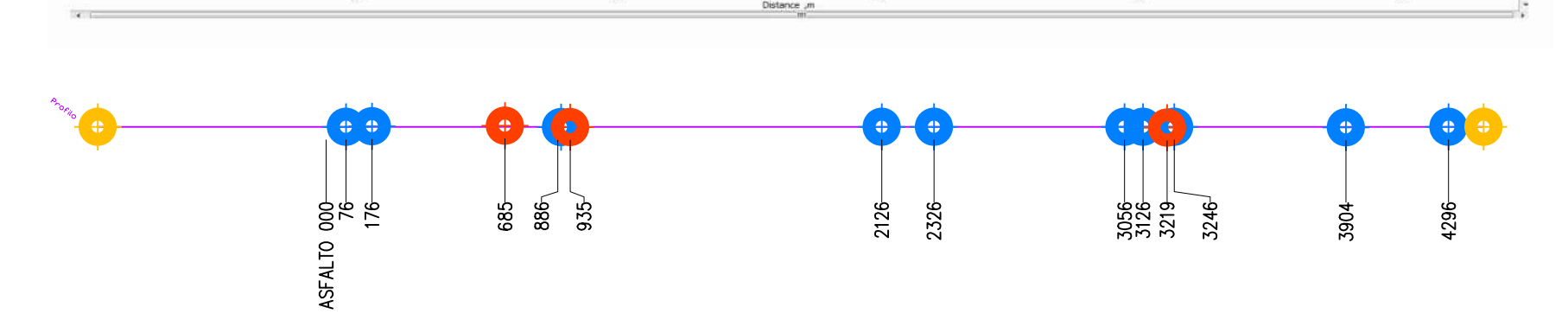
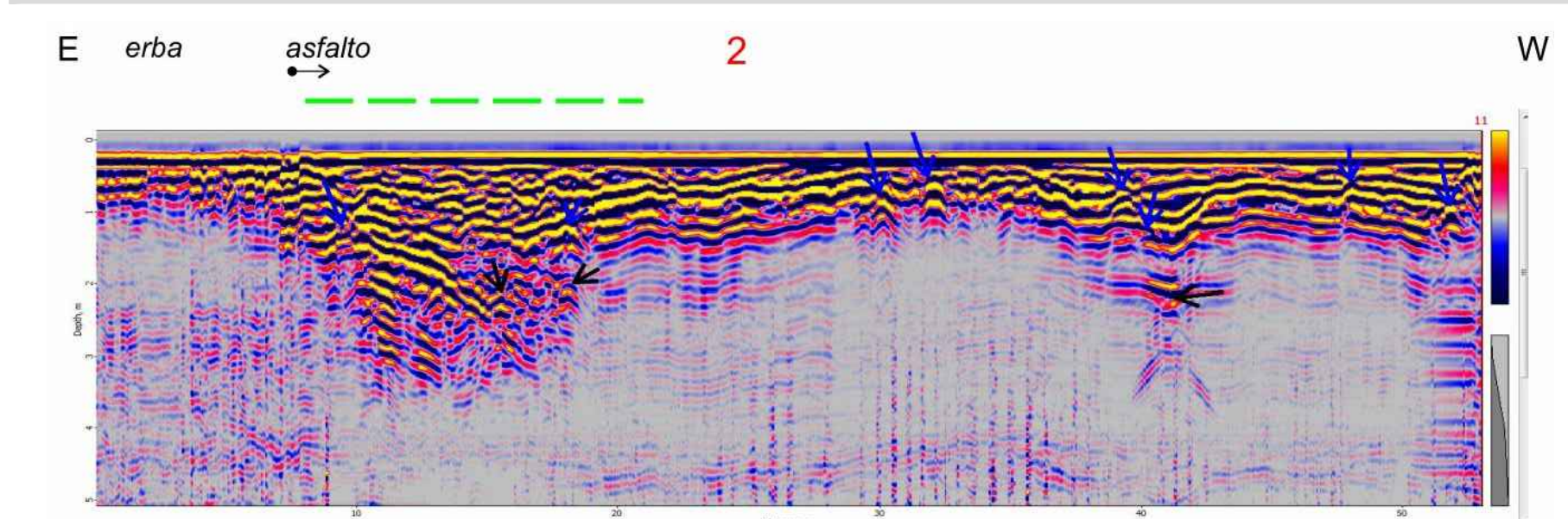
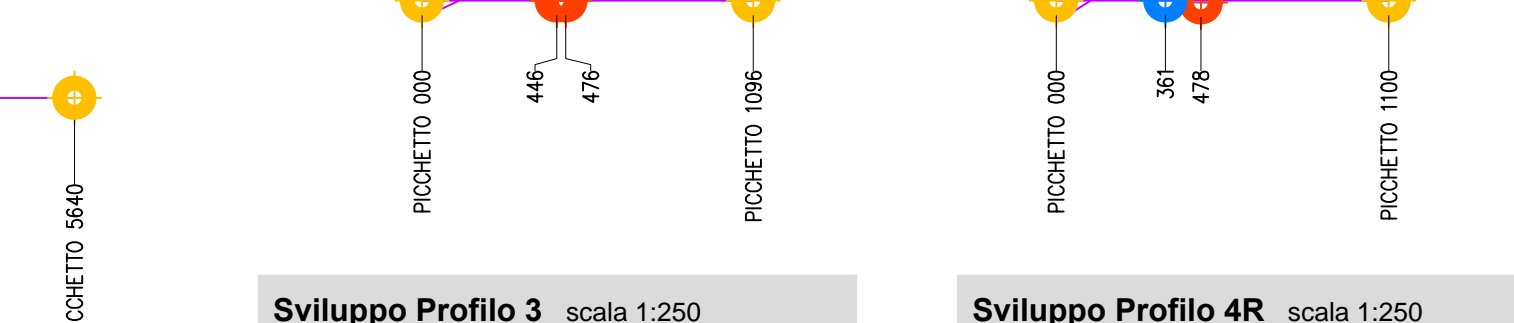
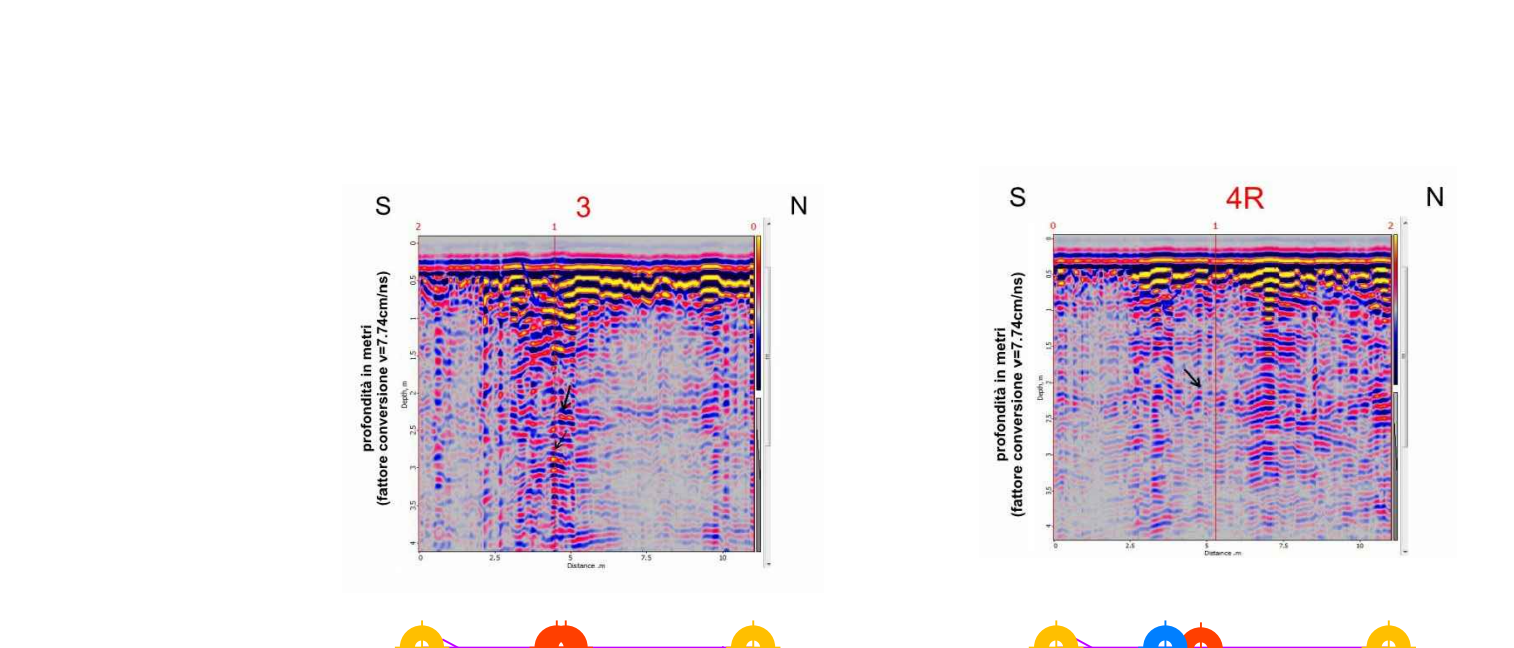


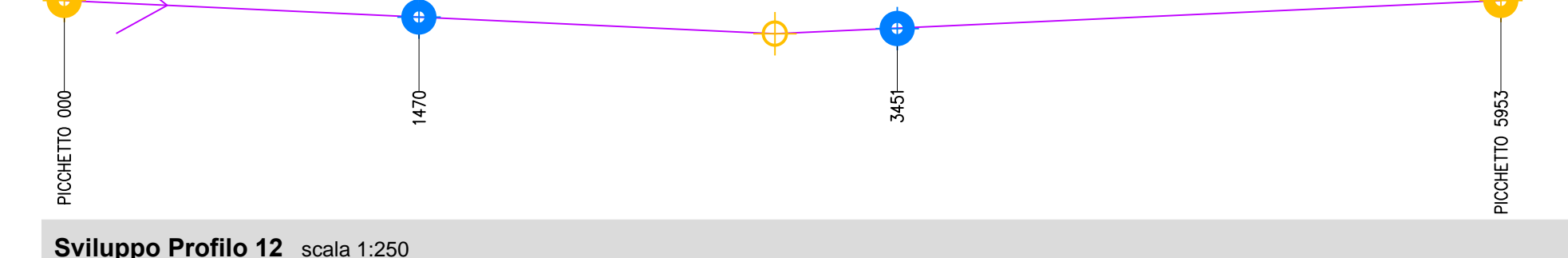
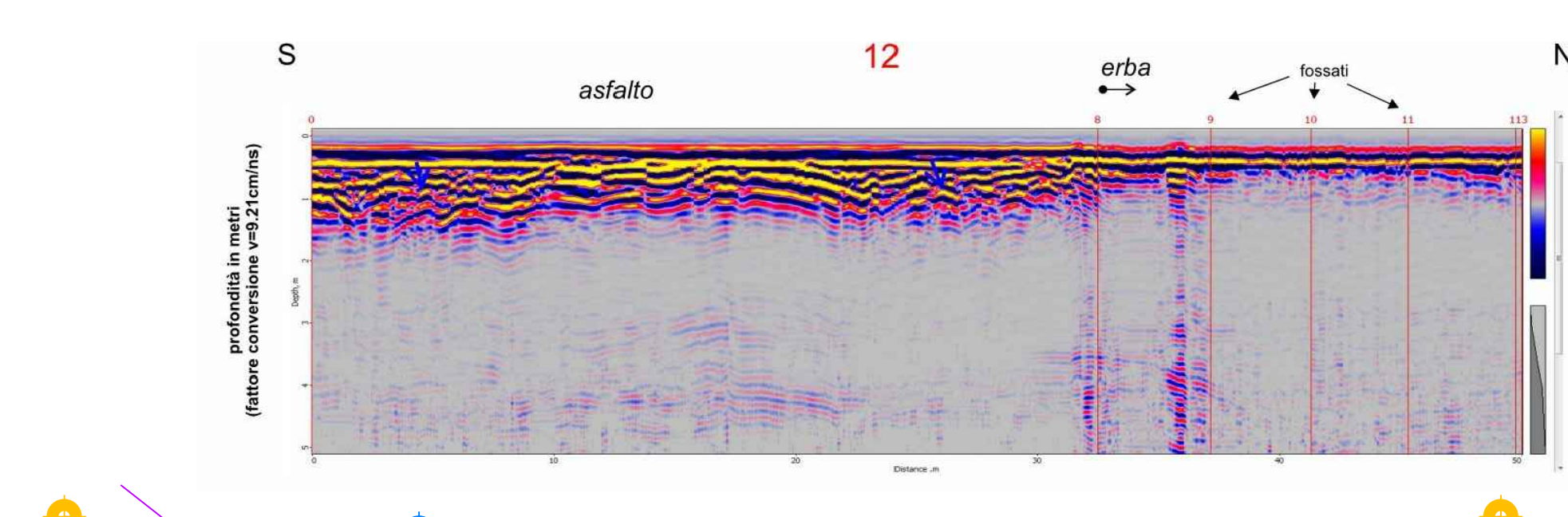
Sviluppo Profilo 1 scala 1:250



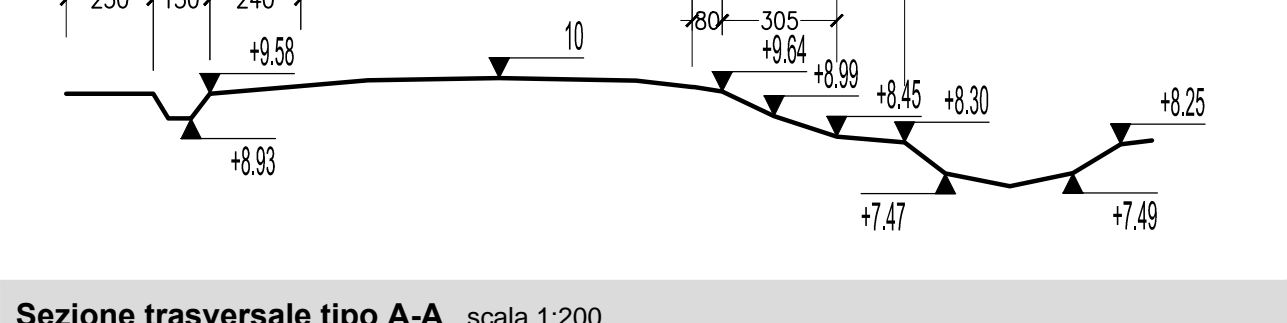
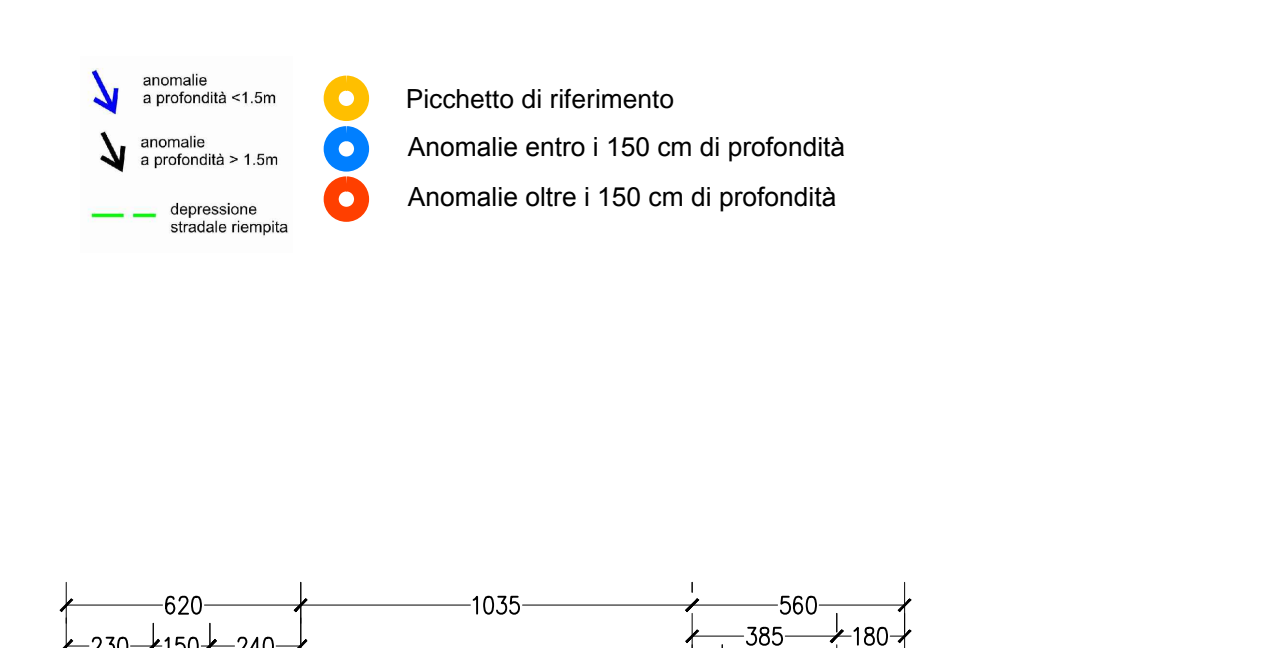
Sviluppo Profilo 2 scala 1:250



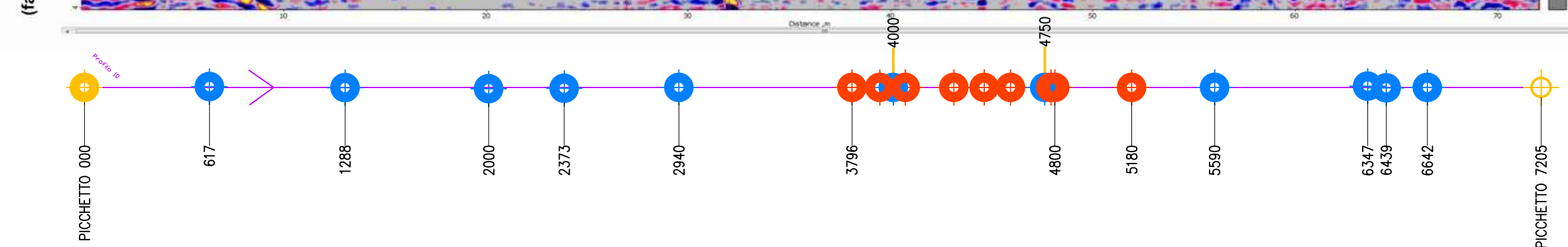
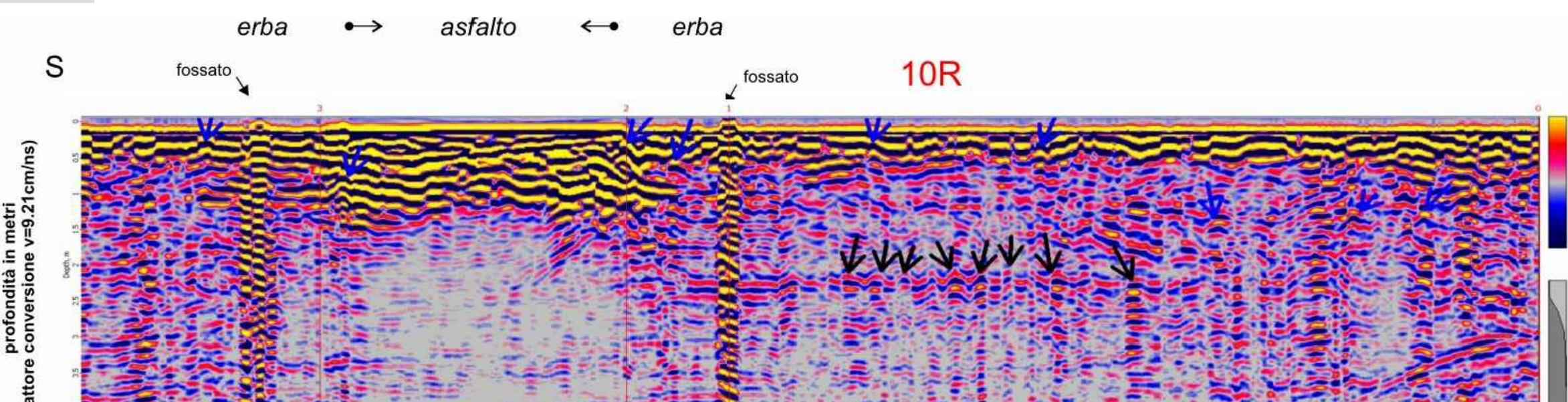
Sviluppo Profilo 3 scala 1:250 Sviluppo Profilo 4R scala 1:250



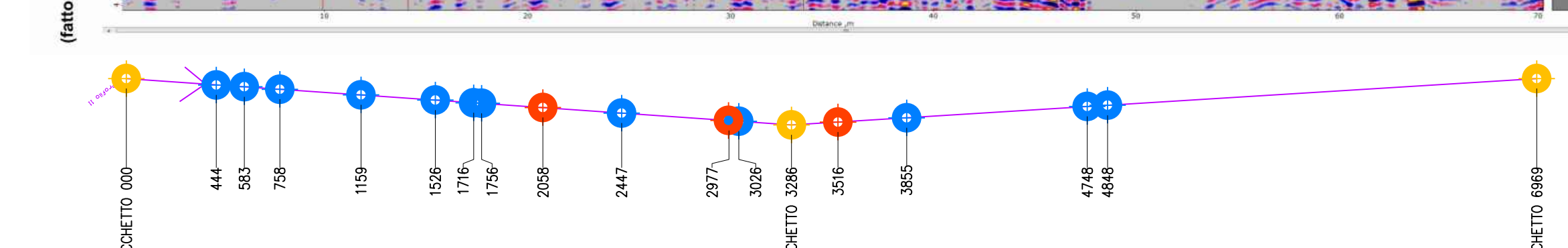
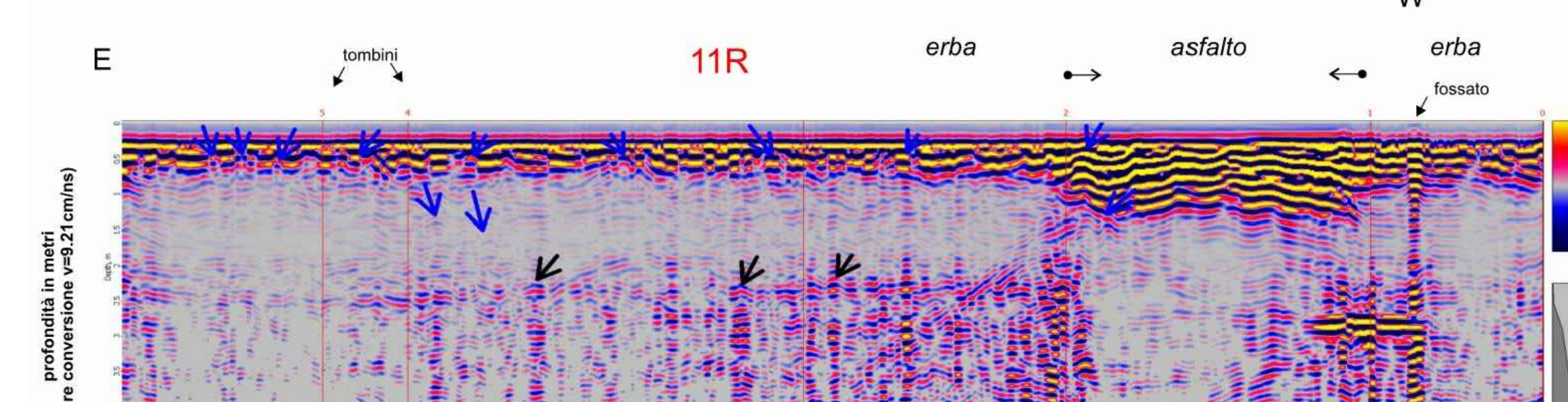
Sviluppo Profilo 12 scala 1:250



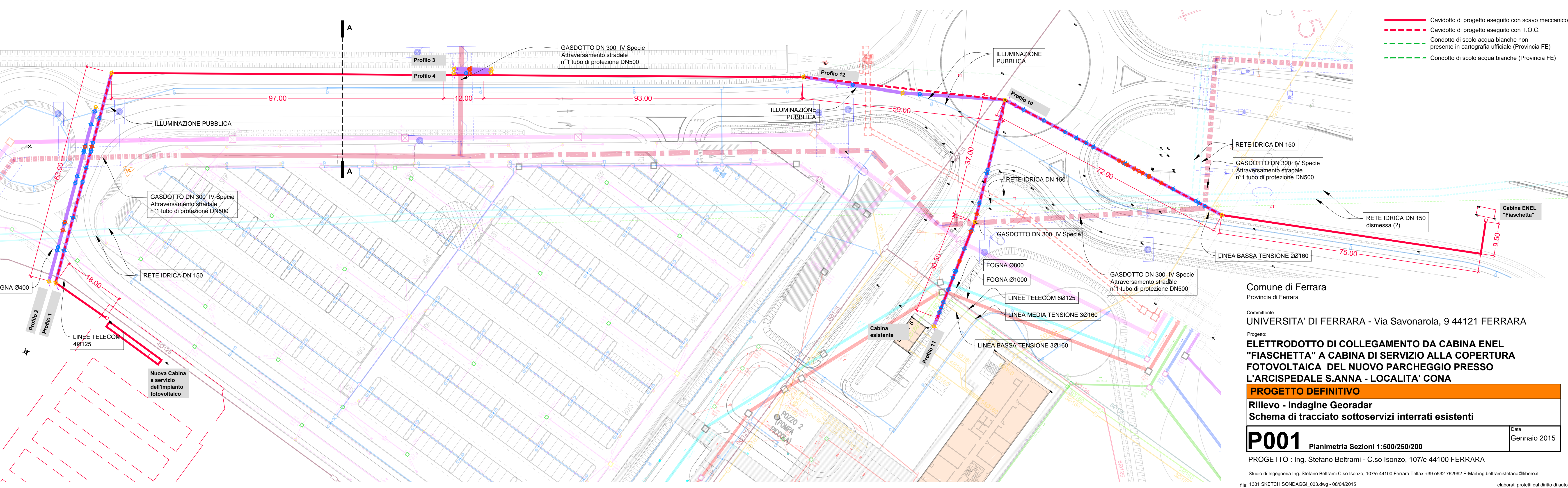
Sezione trasversale tipo A-A scala 1:200



Sviluppo Profilo 10R scala 1:250



Sviluppo Profilo 11R scala 1:250



Comune di Ferrara
Provincia di Ferrara

Committente
UNIVERSITA' DI FERRARA - Via Savonarola, 9 44121 FERRARA

Progetto:
ELETTRODOTTO DI COLLEGAMENTO DA CABINA ENEL "FIASCHETTA" A CABINA DI SERVIZIO ALLA COPERTURA FOTOVOLTAICA DEL NUOVO PARCHEGGIO PRESSO L'ARCISPEDALE S. ANNA - LOCALITA' CONA

PROGETTO DEFINITIVO

P001	Planimetria Sezioni 1:500/250/200	Data Gennaio 2015
-------------	-----------------------------------	----------------------

PROGETTO : Ing. Stefano Beltrami - C.so Isonzo, 107/e 44100 FERRARA

Studio di Ingegneria Ing. Stefano Beltrami C.so Isonzo, 107/e 44100 Ferrara Tel/fax +39 0532 762992 E-Mail ing.beltrami@libero.it

file: 1331 SKETCH SONDAGGI_003.dwg - 08/04/2015

elaborati protetti dal diritto di autore